

READY, SET, GO!

Name

Key

Period

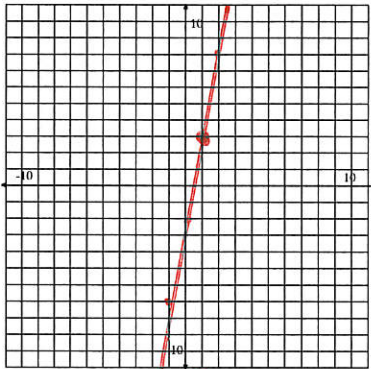
Date

READY

Topic: Solutions to an equation.

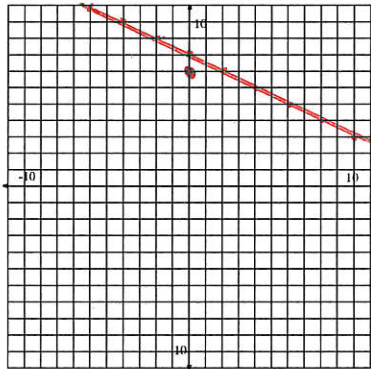
Graph the following equations on the coordinate grid. Determine if the given point is a solution to the equation?

1. $y = 5x - 2$



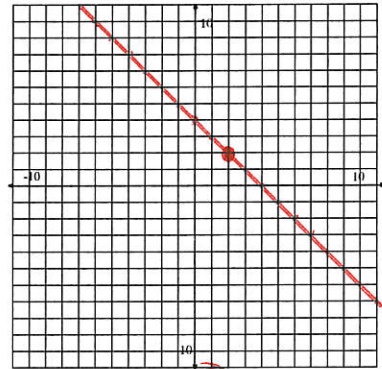
Point: (1, 3) **Yes?** / No?

2. $y = -\frac{1}{2}x + 8$



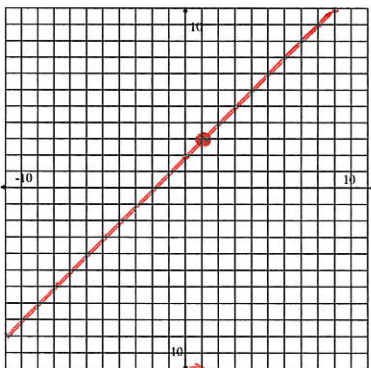
Point: (0, 7) Yes? / **No?**

3. $y = -x + 4$



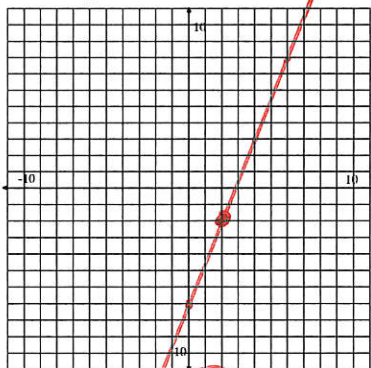
Point: (2, 2) **Yes?** / No?

4. $y = x + 2$



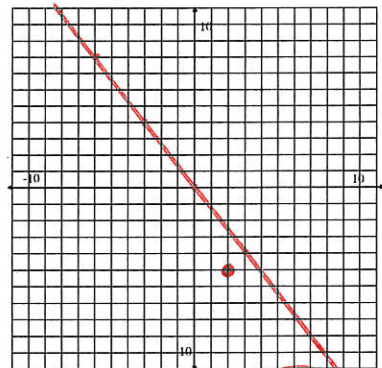
Point: (1, 3) **Yes?** / No?

5. $y = \frac{5}{2}x - 7$



Point: (2, -2) **Yes?** / No?

6. $y = -\frac{4}{3}x$



Point: (2, -5) Yes? / **No?**

SET

Topic: Solve linear equations using parentheses.

Determine if the two expressions listed are equivalent. Explain your reasoning.

7. $14 - (3a + 2)$	$14 - 3a - 2$	8. $4b - 10$	$2(2b - 5)$
Yes		Yes	
9. $\frac{(x-7)}{4}$	$\frac{x}{4} - \frac{7}{4}$	10. $\frac{3(w-9)}{5}$	$\frac{3w}{5} - 27$
Yes		No	

11. Without solving, determine if the two equations below have the same solution. Explain why or why not?

$$3(x - 5) = 35 \text{ and } 3x - 5 = 35.$$

12. Circle the expressions that are equivalent.

$\frac{4t - 10}{2}$	$\frac{4t}{2} - 10$	$2t - 10$	$4t - 5$
---------------------	---------------------	-----------	----------

Solve for x.

13. $\frac{4(x-2)}{5} = 20$

$$x = 27$$

14. $4\left(\frac{x}{5} - 2\right) = 20$

$$x = 35$$

15. $\frac{4x-2}{5} = 20$

$$x = 25.5$$

GO

Topic: Determine if a number is a solution to an equation.

Indicate whether the given value is a solution to the corresponding equation.
Show your work.

16. $a = -3$; $4a + 3 = -9$

Yes?/No?

17. $x = \frac{4}{3}$;

$\frac{3}{4}x + \frac{1}{2} = \frac{3}{2}$

Yes?/No?

18. $y = 2$; $2.5y - 10 = -0.5$

Yes?/No?

19. $z = -5$;

$2(5 - 2z) = 20 - 2(z - 1)$

Yes?/No?

20. $w = \frac{1}{4}$; $4w = w + \frac{3}{4}$

Yes?/No?

21. ~~$x = 5$~~ ;

$6x - 2 = 4(x + 2)$

Yes?/No?